

MONTHLY MEMBERSHIP PROGRESS REPORT

LOCATION COLORADO

District 6 C

Results as of: 7/31/2022

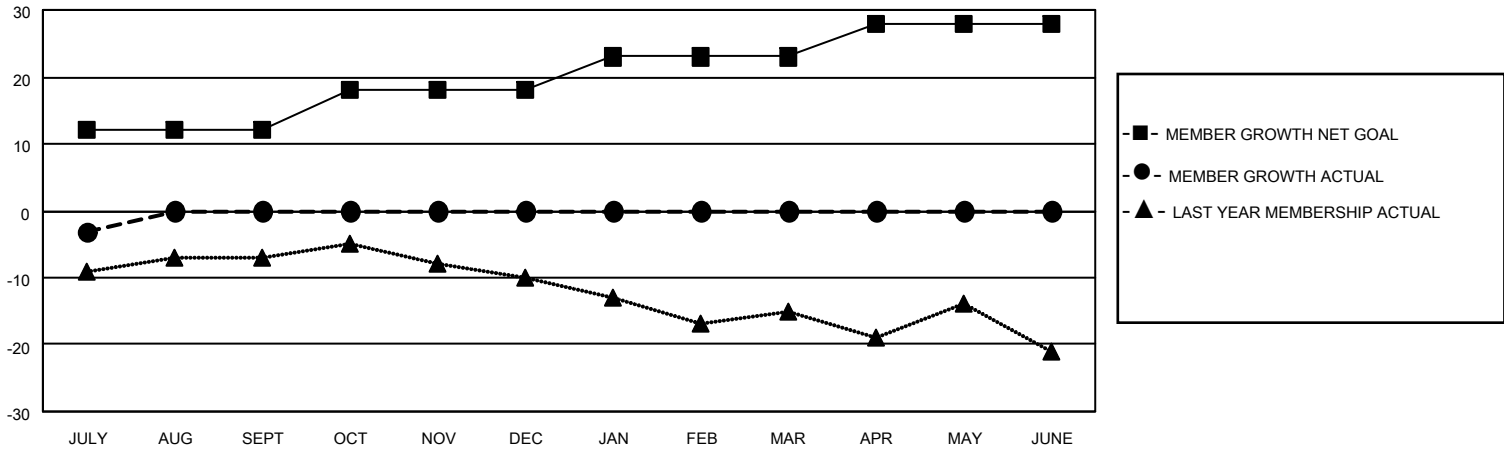
Clubs			
RESULTS FOR 2022-2023			
QUARTER	NEW CLUB GOAL	NEW CLUBS	DROPPED CLUBS
JULY/AUG/SEPT	0	0	0
OCT/NOV/DEC	0	0	0
JAN/FEB/MAR	1	0	0
APR/MAY/JUNE	0	0	0

Members			
RESULTS FOR 2022-2023			
QUARTER	MEMBER GROWTH NET GOAL	MEMBER GROWTH ACTUAL	DROPPED MEMBERS ACTUAL (including transfers)
JULY/AUG/SEPT	12	0	3
OCT/NOV/DEC	6	0	0
JAN/FEB/MAR	5	0	0
APR/MAY/JUNE	5	0	0

GOALS AND ACTUAL NEW CLUBS CUMULATIVE



GOALS AND ACTUAL MEMBERS CUMULATIVE



DROPPED CLUBS: 0

0 CLUBS OF 26 ADDED 1 OR MORE NEW MEMBERS

GENDER DISTRIBUTION

MALE	296 (58.15%)
FEMALE	213 (41.85%)
NON BINARY	0 (0.00%)
PREFER NOT TO ANSWER	0 (0.00%)

DROPPED MEMBERS

[CLICK HERE FOR CUMULATIVE MEMBERSHIP DATA](#)

DECEASED	1
CLUB CANCELLED	0
OTHER	2
TOTAL	3

TOTAL FAMILY UNIT MEMBERS	76
FAMILY MEMBERS PAYING HALF DUES	39